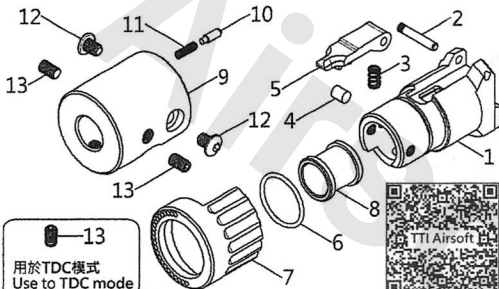


# WE GALAXY 1911-SERIES CNC HOP UP CHAMBER

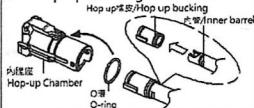
## 安裝說明 INSTALLATION MANUAL



13

用於TDC模式  
Use to TDC mode

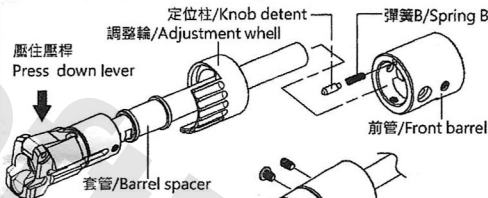
1. 安裝O環,內膛橡皮,內管  
1.Insert the O-ring and inner barrel & hop up bucking into chamber.



2. 安裝彈簧A,橡膠圓柱  
2.Insert the spring A & Hop-up nub.



3. 安裝調整輪,外管,套管 3.Insert the adjustment wheel, out barrel, barrel spacer.



NO.	品名 Parts name	NO.	品名 Parts name
1	內膛座/Hop-up chamber	8	套管/Barrel spacer
2	插梢/Pin	9	前管/Front barrel
3	彈簧A/Spring A	10	定位柱/Knob detent
4	橡膠圓柱/Hop-up nub	11	彈簧B/Spring B
5	壓桿/Hop-up lever	12	半圓頭內六角M3X4 X2 Hex socket head cap M3X4 X2
6	O環/O-ring	13	止付M3X5 X3 Set screws M3X5 X3
7	調整輪/Adjustment wheel		

4. BB彈道調整  
4.HOP-UP ADJUSTMENT

